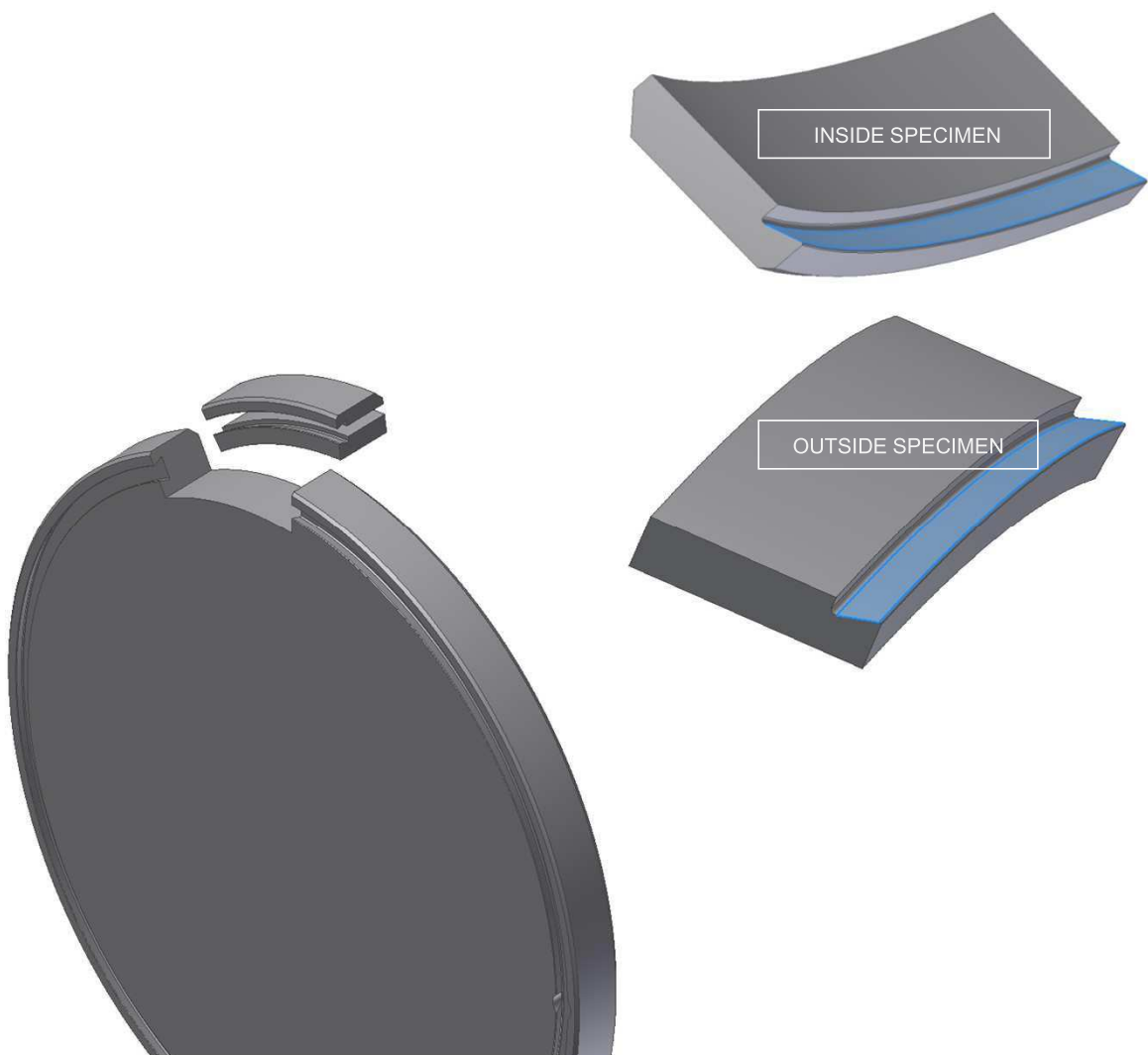


## Essential particular\_O-ring groove (No.42586952)

Manufacturing and management of Dovetail O-ring groove.

- 1) Measurement and comparison of surface condition of O-ring groove
- 2) Overall machining status <Sharp edge and roughness check>
- 3) Circulation of the sealing rate
- 4) Siligum molding check to dimension

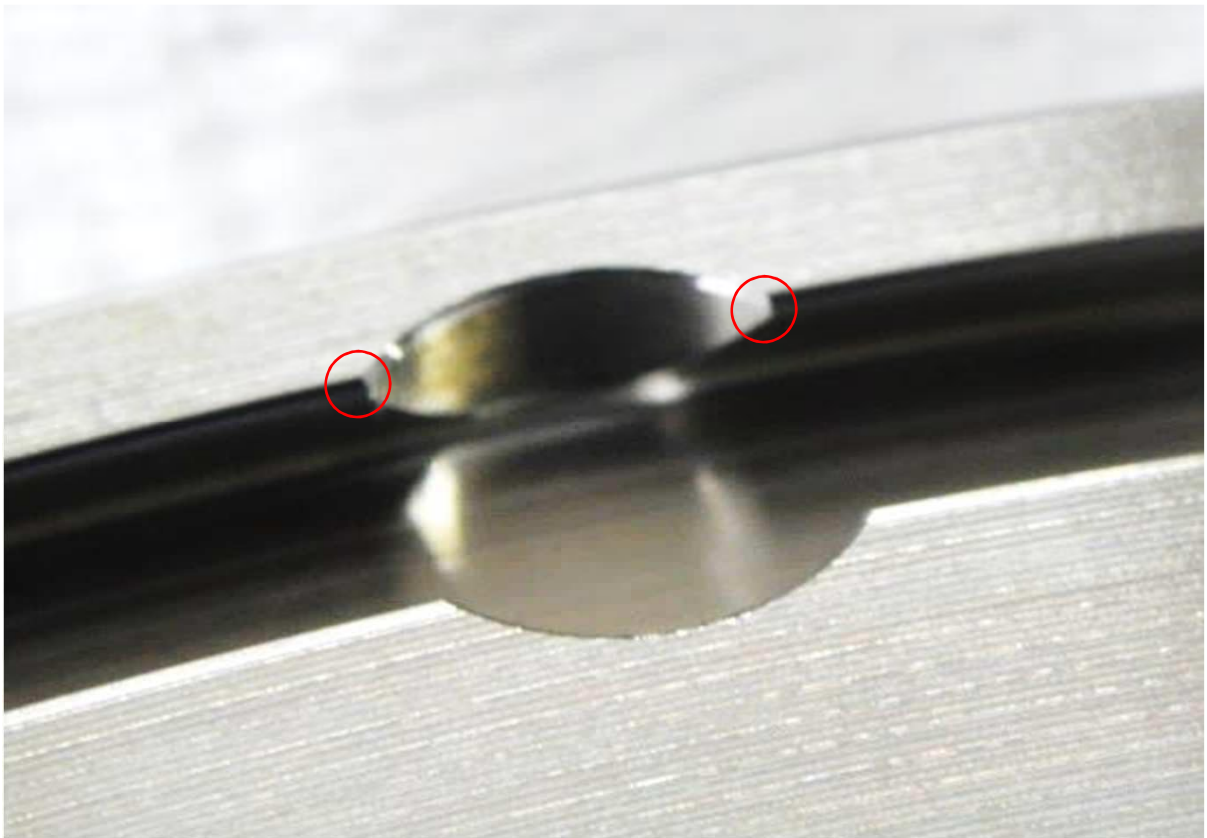
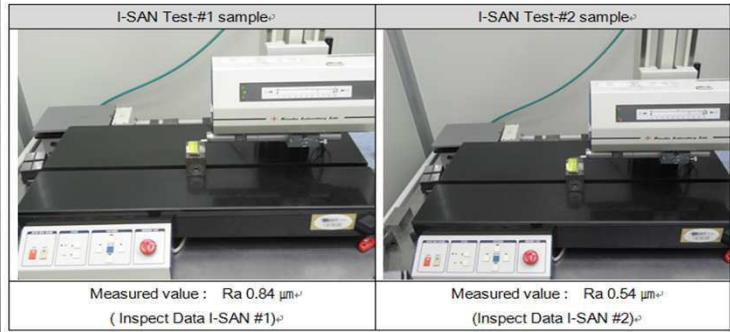




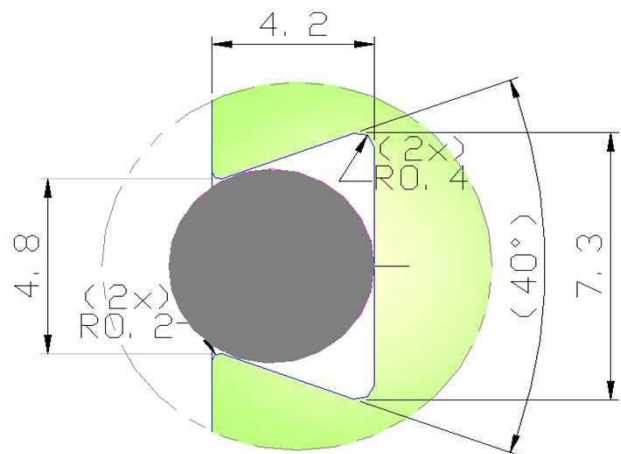
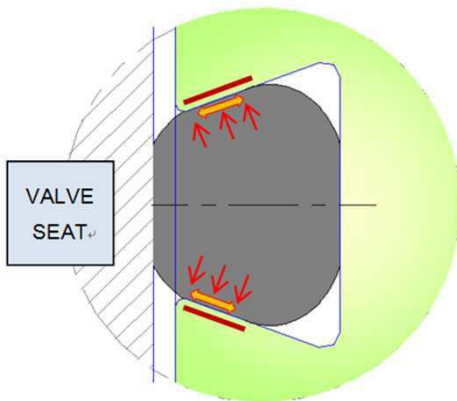
Sharp corner checking



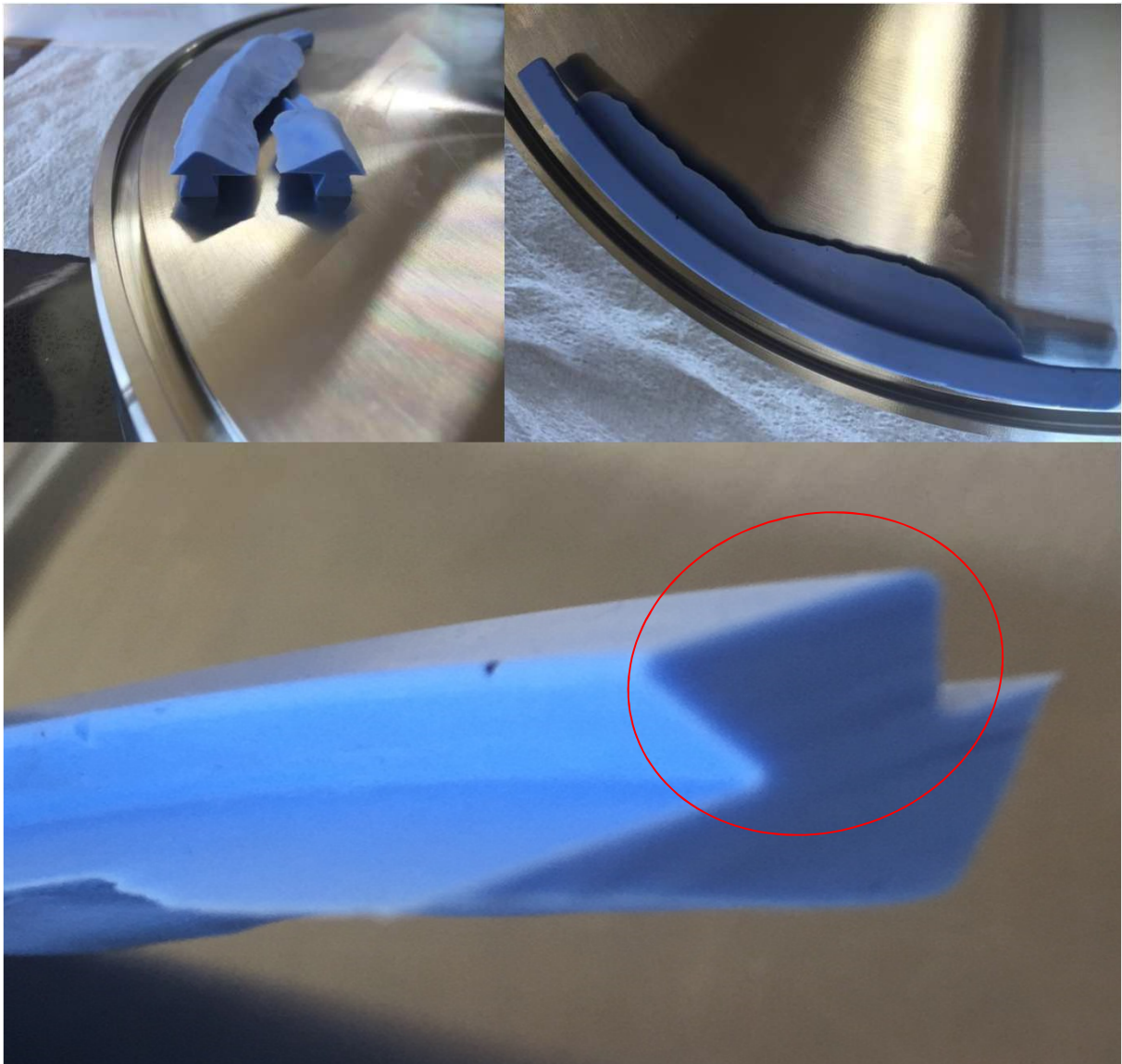
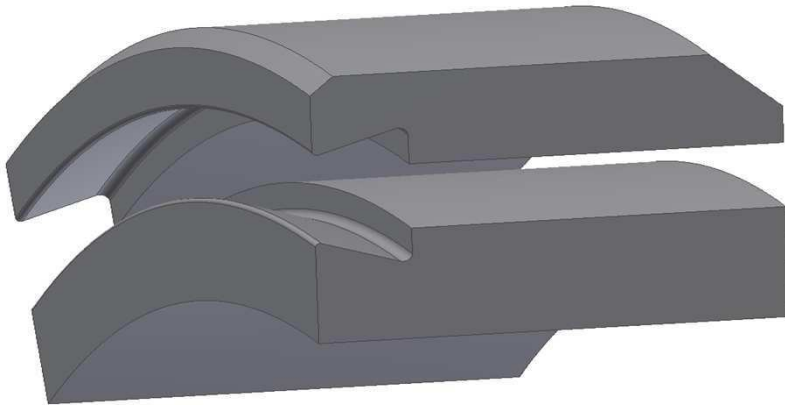
Machining surface checking



Circulation of sealing rate



⚠ Siligum molding checking



⚠ Normally, Dovetail O-ring groove is checked by dimensional inspection, machining roughness of Seal surface by naked eye. Nondestructive testing is conducted only in special circumstances.